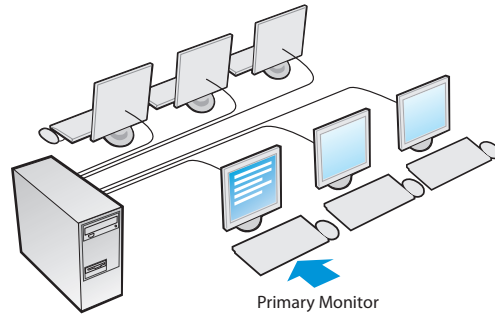


STEP 1- Assembling the Multistation

1

Arrange monitors, keyboards, mice and optionally USB hubs.

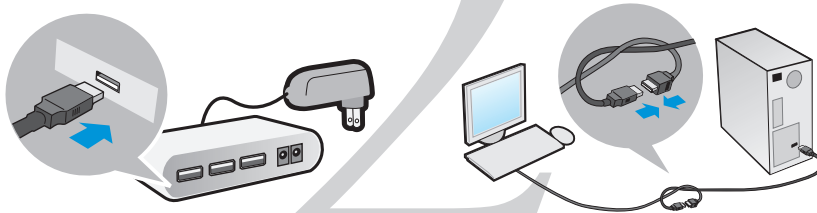
NOTE: The Primary Monitor (on which startup messages will appear) should be the most visible.



STEP 2- Connect All Devices

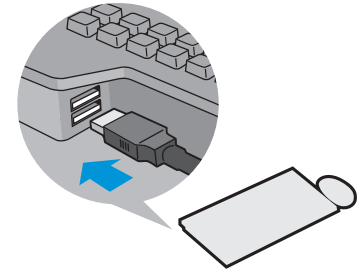
2

Using USB Hubs (recommended) or extension cables where necessary.



TIP: A half-hitch knot helps ensure USB extension cables stay linked together. Ensure that the USB device has no more than 15ft of cable between it and the nearest USB hub.

NOTE: Unpowered USB hubs, whether external or integrated into a USB keyboard, typically only provide enough power to support a single keyboard and mouse. Be sure to use a **powered USB hub** if you are attaching additional devices.



STEP 3- Plug in Cables

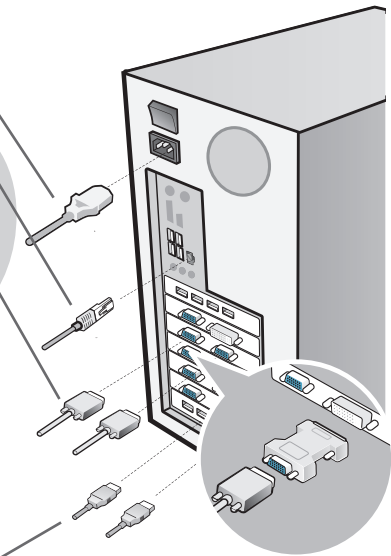
Power cable: We recommend connecting all power cables into surge-protected power bars or UPS units.

Ethernet Cable

Monitor Cables: Connect monitors to video card ports.

Note: Some video outputs may require a DVI monitor or a DVI to VGA adaptor to attach to your VGA monitors. Must be purchased separately if not included with your purchase.

USB Cables

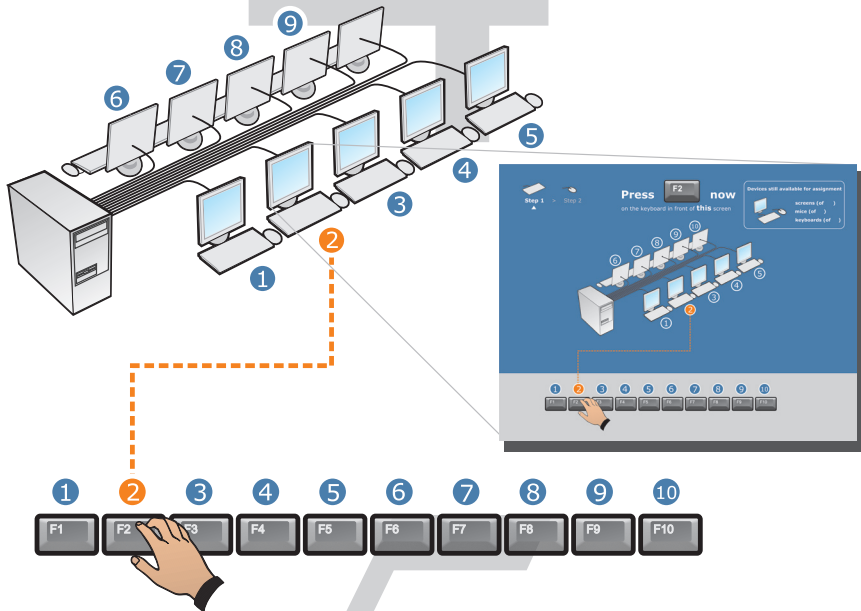


You are now ready to power up the computer.

STEP 4- Assign Keyboards to Monitors

After boot-up is complete, graphical instructions should appear on each screen prompting you to assign a keyboard and mouse.

To assign keyboards and mice to monitors, press the F-key(F1-F10) according to the message displayed on the monitor in front of the keyboard (see diagram below).

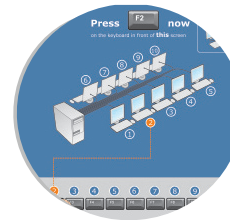


STEP 5- Create User Accounts:

Logging in as the same user on several stations at once causes problems. You will need at least one user account per station. Consult your Linux support documentation for instructions on how to do this.

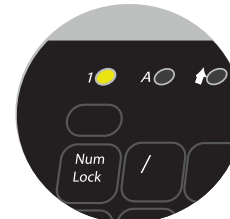
Troubleshooting Tip:

Each screen will show how many devices are available for assignment, verify these numbers match your expectations.



No signal or image on monitor:

Trace the monitor cable back to the central computer box to check the connection and verify that monitor is powered on.

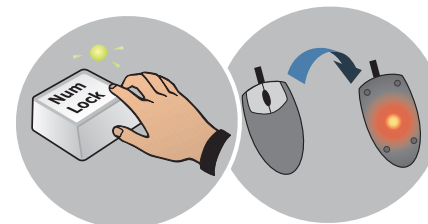


Key press doesn't assign keyboard:

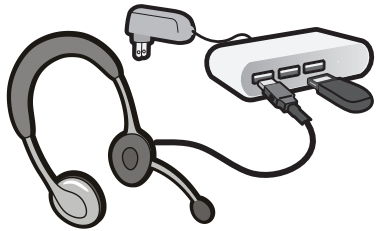
LED Lights will blink on unassigned keyboards. If the lights aren't blinking, the keyboard has either already been assigned (press Ctrl+Alt+Break to unassign) or is not connected (unplug and reconnect the USB hub or keyboard).

Keyboard or Mouse not working:

Press the "Num Lock" key to ensure the keyboard is connected and active. (The corresponding LED should blink on and off). Check that the optical mouse light is on. Reconnect if necessary.



Using USB devices (Sound & Storage)



Simply plug-in your USB sound and storage device. It will be automatically privately assigned to the correct station when connected to:

- the same powered USB hub as the keyboard, or,
- a USB port built into the keyboard.

Note: USB audio devices should be plugged in before logging into the computer.

Powered USB Hubs Recommended. Some USB devices won't work when plugged into unpowered USB hubs (including USB ports in keyboards) as they may require more power than is available. This power shortage can cause temporary malfunction of one or all USB devices connected to that station. To fix, simply disconnect and reconnect the devices. Should you experience any problems with your USB devices, it is recommended that you purchase and use a powered USB hub at each station.

Special Keypresses:

Ctrl+Alt+Break: Reset the keyboard for this station. This enables you to unlink a keyboard from it's monitor, and returning you to the the assignment screen.

Ctrl+Alt+Backspace: Restart / Force logout this station. This enables you to restart an individual frozen station without rebooting the PC. Forced logout is not recommended as it can have unexpected impacts on running applications.

Onboard sound device

The onboard sound device is automatically assigned to the first available station that does not have a USB sound device.

Control Panel (Advanced Options)

To launch the control panel click the Userful Icon found here:
Applications > Utilities > More Programs > Userful

Switch between Multi-Station and Single Station X.

Reset keyboard and mouse assignment for all stations

Change Monitor resolution and Wide-screen support



Send a bug report including system info to Userful™

Resources and Support:

.....
 Instead say: For technical support including documentation, tips and tricks on Userful Multiplier™ visit:
<http://support.userful.com>

For detailed installation and configuration options including known limitations, touch screens, etc. please visit:
http://support.userful.com/wiki/index.php/Manuals/UMx/User_Guide